

# Community College & Technical University Automation Courses:

## TechEdu Perpetual Site Licenses: Automation Engineering.

More details, videos and samples online at ...

<http://bin95.com/trade-tech-college-courseware.htm>

### Attn: Community Colleges...

Seeking to integrate blended or online instruction into your curriculum, but don't have the capacity to create your own content modules and courses? See the courseware resources for educators below...

This automation engineering courseware (Koldwater series) comes in Perpetual Site licenses. Great, super low-cost way to supplement the Technical University, to the smaller City College and Community College programs. These trade tech college courses are used by companies and colleges around the world to train automation and industrial technicians.

**SEVEN (7)  
CERTIFICATE  
COURSES  
INCLUDED!**

RSVIEW32 HMI TRAINING SOFTWARE

CONTROLLOGIX™ - DALILOGIX  
5000 PAC TRAINING

ELECTRICAL TROUBLESHOOTING  
TRAINING

PLC TRAINING & LOGIXPRO  
PLC SIMULATOR

ELECTRIC MOTORS AND  
CONTROLS TRAINING

VFDTRAINER VARIABLE  
SPEED DRIVES EXPLAINED.

DEVICENET SOFTWARE TUTORIAL

## Industrial & Building Automation Courses:

Details at <http://bin95.com/trade-tech-college-courseware.htm>

Perpetual Site licenses for these industrial and building automation courses can be purchased for each course individually, or bundled for extra savings up to 36%! Each courseware Perpetual Site license includes, for each facility licensed...

- ☑ No annual fees!
- ☑ Never expires!
- ☑ Unlimited users!
- ☑ Unlimited installations!
- ☑ No internet required after initial installation.
- ☑ Lab manual included in PDF format!
- ☑ Student scores in LMS friendly MS DB
- ☑ Real world interactive simulations.
- ☑ Facility license to repurpose installed assets for LMS customization.

Video here if viewing online!

#### **About the automation courseware perpetual site license:**

The site license for the Koldwater series of automation courseware is **much less expensive** and **more interactive** than learning institutions are used to being offered by other educational software providers. Our Best for Less policies make the site license purchasing option perfect for technical schools, community colleges, universities, apprenticeship programs, company training departments, and other industrial training institutes. It is typical with other educational software providers that they do not publicly list their site license prices. Why? Obviously, price is not a selling point for them. Not the case for us, as you will see below. We are transparent, and everyone gets the same low price, regardless of the learning institution's size.

*The pricing below is site license price per facility. If you have 3 or more campuses or facilities, [contact us](http://bin95.com/contact-bin95.htm) online at <http://bin95.com/contact-bin95.htm> or call 1-573-547-5630 for special pricing, further discounted and customized to your specific needs. Note, discounted pricings on bundles may not be available in the near future. So, take advantage now and please take that into consideration if working on next year's budget.*

Each site license is per physical facility, for unlimited users, unlimited installations. License owner can install on college or company local area network, plus install stand-alone copies on PC, not on the network and on laptops owned by license holder. Customer may also navigate to folder where assets were installed and use “individual assets in custom courseworks” which customer develops, as long as said content does not leave the facility licensed. So, this builds even greater flexibility and value into this one time purchase.

### **About Industrial & Building Automation Courses**

Most educational software course providers in the courseware marketplace claim interactivity, although it is basically the student flipping through PowerPoint slides, memorizing data long enough to answer questions at the end. Not so with our automation technology courses. Ours includes real world simulations, where the user can click on switches and actually see the circuit respond! Tests are not only answering questions, but the learner is also tested on actual troubleshooting of real world simulated circuits. So, they not only memorize theoretical and scholastic knowledge, but learn automation practical knowledge and gain greater understanding. When purchasing bundles below with full simulation software, the automation learner gains even more hands-on experience while reducing the amount of training equipment the company or college needs to purchase and maintain. Hands on experience is also amplified when you utilize the Lab manuals included in each course.

### **Each Trade-Tech-college course includes ...**

- ☑ Practical knowledge
- ☑ Multiple choice questions
- ☑ Troubleshooting section
- ☑ Videos, animations and simulations
- ☑ Closed captions for hearing impaired
- ☑ Glossary
- ☑ Lab Manual in PDF format
- ☑ Mini LMS
- ☑ Student can print Certificate of completion
- ☑ Compatibility with Win 10, 8, 7 and XP



### **Technician's Dream Bundle:**

<http://bin95.com/industrialtraininginstitutecourses.htm>

Includes the following 7 course software titles, plus the Constructor Electrical/PLC simulator and drawing software. Of specific interest to industrial and building automation professionals. This bundle includes PLC training, PAC training, HMI training, VFD, motor and controls training, troubleshooting trainer, DeviceNet training and the Constructor Software that is great for industrial training institute instructors to use as teaching tool. You can click on each certificate course software titles at single user link above to see details, screen shots and often videos. Unlimited users and installations per facility - Price \$9890

click [https://bin95.com/ebooks/education\\_corporate\\_pricing.php](https://bin95.com/ebooks/education_corporate_pricing.php) to order.



### **Maintenance Technician's Bundle:**

<http://bin95.com/maintenancetechniciantraining.htm>

Includes the following 8 course software titles. Of specific interest to industrial maintenance technicians and HVAC technicians. This bundle includes PLC training, PAC training, HMI training, VFD, motor and controls training, troubleshooting trainer, DeviceNet training and the fluid power trainer. You can click on each certificate course software titles at single user link above to see details, screen shots and often videos. Unlimited users and installations per facility - Price \$7890

click [https://bin95.com/ebooks/education\\_corporate\\_pricing.php](https://bin95.com/ebooks/education_corporate_pricing.php) to order.



### **[Automation Technology Specialist's Bundle:](#)**

<http://bin95.com/automationtechniciantraining.htm>

Includes the following 7 course software titles. Of specific interest to Automation technicians, industrial technician as well as others. This bundle includes PLC training, PAC training, HMI training, VFD, motor and controls training, troubleshooting trainer, and DeviceNet training. You can click on each certificate course software titles at single user link above to see details, screen shots and often videos. Unlimited users and installations per facility - Price \$6890

click [https://bin95.com/ebooks/education\\_corporate\\_pricing.php](https://bin95.com/ebooks/education_corporate_pricing.php) to order.



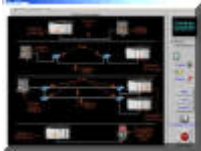
### **[PLC Technician Training Bundle:](#)**

<http://bin95.com/PLCTechnician.htm>

Includes the following 4 certificate course software titles. Of specific interest to PLC technicians and automation engineering as well as others. This bundle includes PLC training, PAC training, HMI training and VFD training courses. You can click on each certificate course software titles at single user link above to see details, screen shots and often videos. Unlimited users and installations per facility - Price \$4890

click [https://bin95.com/ebooks/education\\_corporate\\_pricing.php](https://bin95.com/ebooks/education_corporate_pricing.php) to order.

If your corporate training department or school budget cannot fit one of the bundles currently discounted above, you may consider purchasing a site license for a single certificate course title below, one at a time over a longer period of time. Even purchasing one course site licenses at a time below, is a greater savings than you will find anywhere else in the courseware marketplace!



### **[RSLogix 5000 PAC Certificate Training Program:](#)**

[http://bin95.com/ebooks/controllogix\\_rslogix\\_5000.htm](http://bin95.com/ebooks/controllogix_rslogix_5000.htm)

This certificate course provides a great foundation in using Rockwell's RSLogix 5000 as in introduction to PACs (Process Automation Controllers) and an overview of the Controllogix. Before your students take a PAC course, it is highly recommended they first be fully trained in PLCs. Or at a minimum take the PLC training certificate course below first. You can click on certificate course software single user link above to see course details, screen shots and often videos. Unlimited users and installations per facility - Price \$1890 click [https://bin95.com/ebooks/education\\_corporate\\_pricing.php](https://bin95.com/ebooks/education_corporate_pricing.php) to order.



### **[Fluid Power Certificate Training Program:](#)**

<http://bin95.com/hydraulic-engineering.htm>

After the hydraulic engineering introduction in the Basic Fluid Power Principles section, you move on to hydraulics and pneumatics practical application, followed by hydraulic pumps and miscellaneous components. Of course, as with all of our Koldwater course series, it raps the course up with a troubleshooting section. Over a hundred of the most common ISO CETOP hydraulic symbols covered too. You can click on certificate course software single user link above to see course details, screen shots and often videos. Unlimited users and installations per facility - Price \$1190 click [https://bin95.com/ebooks/education\\_corporate\\_pricing.php](https://bin95.com/ebooks/education_corporate_pricing.php) to order.



### **[Motors and Controls Certificate Training Program:](#)**

<http://bin95.com/ElectricmotorsandcontrolsTraining.htm>

This electric motor control circuit training software is quite detailed. Starting off with wiring diagrams vs. ladder diagrams and motor control theory, covering the

entire AC motor control system. Solenoids, timers, sensors, relays, troubleshooting, even an introduction to PLCs is included. You can click on certificate course software single user link above to see course details, screen shots and often videos. Unlimited users and installations per facility - Price \$1190 click [https://bin95.com/ebooks/education\\_corporate\\_pricing.php](https://bin95.com/ebooks/education_corporate_pricing.php) to order.



### **[PLC Certificate Training Program:](#)**

<http://bin95.com/allen-bradley-plc-programming.htm>

This PLC basics course is based on and simulates Allen Bradley PLC programming software. But 80% of the knowledge can be applied to any brand of PLC. This PLC programming training software includes analog instruction and of course, as with all of our Koldwater course series, it raps the course up with a troubleshooting section. Site License includes free copy of LogixPro on mobile CD license that instructor can use or check out to students. You can click on certificate course software single user link above to see course details, screen shots and often videos. Unlimited users and installations per facility - Price \$1490

click [https://bin95.com/ebooks/education\\_corporate\\_pricing.php](https://bin95.com/ebooks/education_corporate_pricing.php) to order.



### **[HMI Training Program:](#)**

[http://bin95.com/RSView32\\_HMI.htm](http://bin95.com/RSView32_HMI.htm)

This HMI training course uses Rockwell's RSView 32 to teach HMI basics, RSLinx communications, DDE-OPC topics and excel, creating a new RSView project, rsview graphics and more. Data logging is a valuable tool for Predictive Maintenance and activity logs help to prepare for IIoT, Preventive and Predictive Maintenance; this HMI training covers both. Alarming is an extremely important aspect of HMI and SCADA systems, so this course is designed to give the learner a firm understanding of the use and configuration of both digital and analog alarms. You can click on certificate course software single user link above to see course details, screen shots and often videos. Unlimited users and installations per facility - Price \$1690

click [https://bin95.com/ebooks/education\\_corporate\\_pricing.php](https://bin95.com/ebooks/education_corporate_pricing.php) to order.



### **[VFD Training Program:](#)**

[http://bin95.com/Training\\_Software/freq-drive-training.htm](http://bin95.com/Training_Software/freq-drive-training.htm)

This VFD training course is essential to both Industrial & Building Automation technicians, as variable frequency drives are so common in both industries. This certificate course covers AC frequency drive and related motor control troubleshooting. Modules in VFD uses, parts, operation, installation, start up, the VFD controller and even soft starters are covered. Of course, as with all of our Koldwater course series, it raps the course up with a troubleshooting section. You can click on certificate course software single user link above to see course details, screen shots and often videos. Unlimited users and installations per facility - Price \$1290

click [https://bin95.com/ebooks/education\\_corporate\\_pricing.php](https://bin95.com/ebooks/education_corporate_pricing.php) to order.



### **[Electrical troubleshooting Training Program:](#)**

<http://koldwater.com/Electrical-PLC-Troubleshooting-Training.html>

Basic Electrical and PLC Troubleshooting Training Course using real world electrical simulations. User first learns proper electrical troubleshooting techniques, practice with virtual volt ohm meter (VOM), masters electrical and motor control circuits training then moves on to the PLC troubleshooting training. You can click on certificate course software single user link above to see course details, screen shots and often videos. Unlimited users and installations per facility - Price \$890

click [https://bin95.com/ebooks/education\\_corporate\\_pricing.php](https://bin95.com/ebooks/education_corporate_pricing.php) to order.



### **[DeviceNet Training Program:](#)**

[http://bin95.com/DeviceNet\\_Industrial\\_Network.htm](http://bin95.com/DeviceNet_Industrial_Network.htm)

The DeviceNet training course teaches you What is DeviceNet, Component Identification, Power Supplies, DeviceNet Messaging Tips and Tricks and more. Because this DeviceNet training walks you thru simulated design and maintenance of an efficient DeviceNet, this tutorial can be used as preparation training for the commissioning of plant. Includes a simulation of Cutler Hammer Automation's NetView Software, that covers Explicit Messaging. These are things we learned the "hard-way!". You can click on certificate course software single user link above to see course details, screen shots and



often videos. Unlimited users and installations per facility - Price \$1190  
click [https://bin95.com/ebooks/education\\_corporate\\_pricing.php](https://bin95.com/ebooks/education_corporate_pricing.php) to order.

### **Courseware LMS:**

Built in to each automation training certificate course site license version, is a mini LMS that saves student info and score to a MS Access database, for easy export and import to most brands of LMS. If learners are using courses on a local network, you can access all learners scores. If you install any copies of automation training certificate course site license versions on a stand-alone PC or workstation, you will have password protected access to mini LMS via the PC you installed it on. Both network and PC installations have capability for student to print certificate of completion when they score 80% or better.

With the site license, you are also authorized to import assets from courses into your own LMS. As there are literally hundreds of LMS brands being used, we do not support the importing process to your particular brand of LMS. You may seek support for importing assets, from your LMS provider. It is important while doing so, you adhere to the site license requirements that assets only be accessible to the physical location the site license was purchased for. You cannot place the courses or assets on the internet or any network that is accessible outside the physical facility, without first purchasing a special extended site license from us.

---

### **Try before you buy site license:**

*There are free limited demos on this website's download area, and there are videos of the courses being used on single user product page, but we recommend you buy a single user version to get the full experience. If afterwards, you decide to purchase the site license version, we will deduct the cost of single user version, off of your invoice. This way you can choose to try full version first at no additional cost.*

### **Business Industrial Network**

Federal Contractor #: 5BC72

DUN # 829394449 (*Veteran Owned Small Business*)

A+ rating with the Better Business Bureau

Details at <http://bin95.com/trade-tech-college-courseware.htm>

[BIN95.com](http://BIN95.com)

BIN95 @ BIN95.com

2 Cityplace Drive  
Suite 200

St. Louis, MO. 63141

573-547-5630

Fax 314-584-7099