

LogixPro to PLCLogix 500

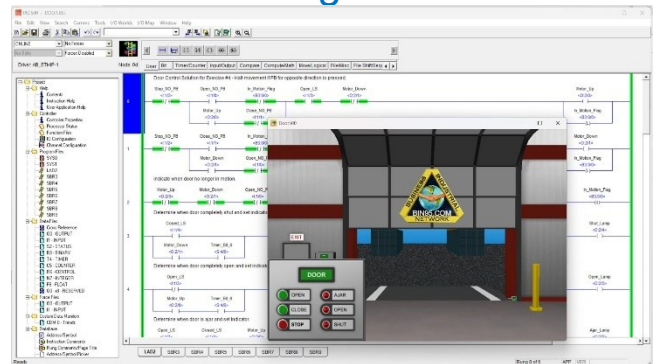
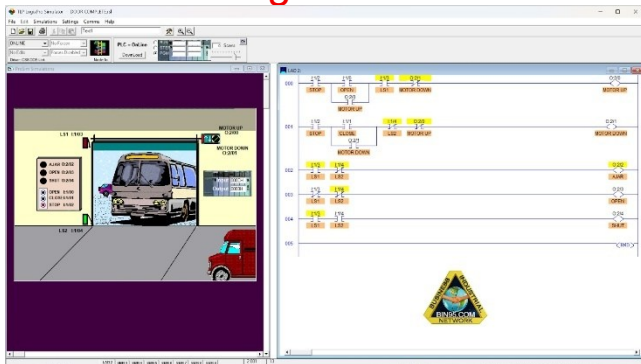
Using a LogixPro simulations with the new PLCLogix 500 simulator

Converting simulations from...

LogixPro™

PLCLogix® 500

TO



Over the years, many instructors and students have created PLC programs using the LogixPro™ simulator. With the release of the more robust PLCLogix® 500 platform, those programs can be opened and updated directly—no conversion utility required.

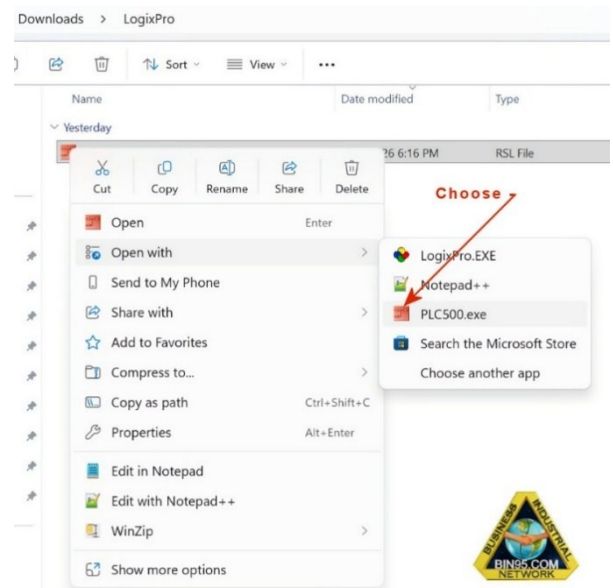
This guide walks you through the simple three-step process for opening, testing, and saving LogixPro *.rsl files in the [PLCLogix 500 Simulator](#), along with practical tips for instructors and lab development.

We'll use the LogixPro™ warehouse door PLC program in these examples.

STEP 1: Open the Original LogixPro Program

If PLCLogix® 500 was installed after LogixPro™, Windows will typically automatically associate *.rsl files with the newer simulator. In most cases, you can simply double-click the file to open it.

If the file association has not been updated, right-click the *.rsl file and choose **Open with** → **PLCLogix 500**.

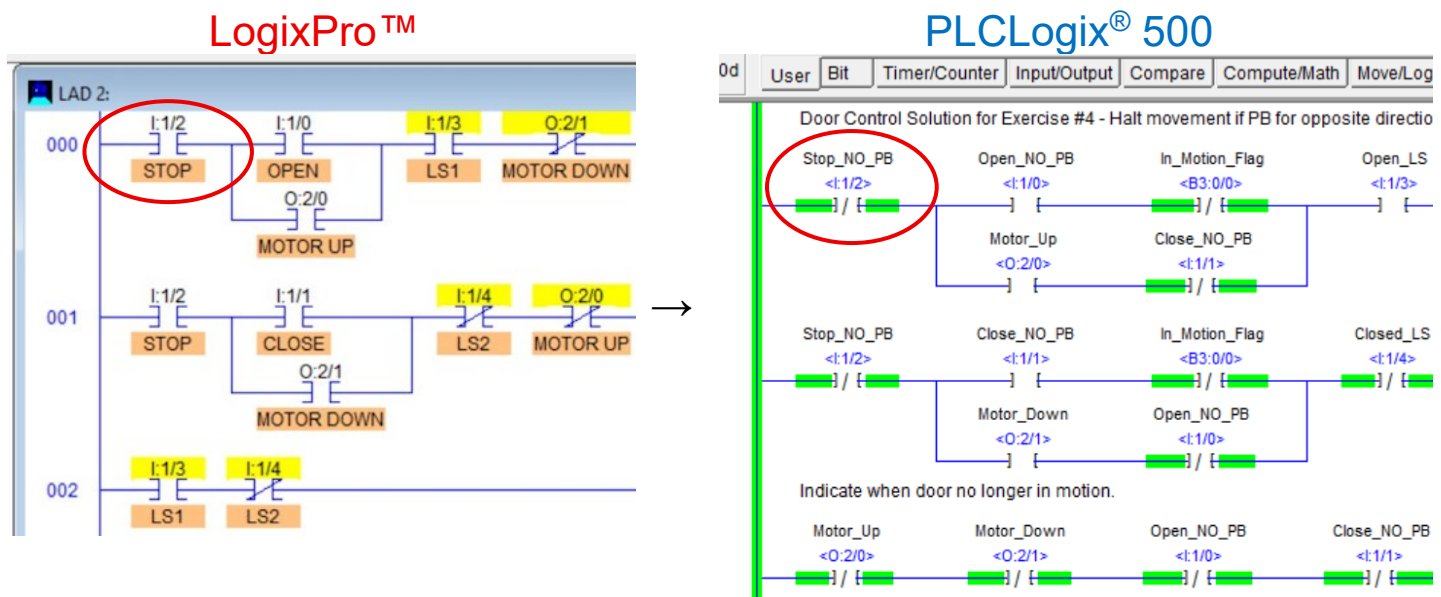


STEP 2: Test and Debug the Imported PLC Program

After loading the ladder logic created in RSLogix, run the program in **Run** mode and verify all functions. Most logic will operate exactly as before, with the exception of a few I/O differences between the two simulators.

For example, in the LogixPro™ warehouse door simulation, the **Stop** pushbutton is wired as **normally closed (NC)**. In PLCLogix® 500, the Stop push button is **normally open (NO)**.

As a result, the imported instruction for input **I:1/2** must be changed from **XIC** to **XIO** to match the PLCLogix® 500 hardware model.



This adjustment takes only a moment—especially if your program includes a cross-reference subroutine, as recommended as a best-practice by PLC Training Org.

Instructor Tip: Have students load their old LogixPro™ programs into PLCLogix® 500, identify any I/O differences, and correct the logic. It's an excellent troubleshooting and migration exercise.

STEP 3: Save the Updated PLCLogix Program

Once the program runs correctly in PLCLogix® 500, save it under a new filename (e.g., door_updated.rsl). This preserves the original LogixPro™ version for future reference or comparison.

Bonus for Technical Instructors

[PLCLogix 500 simulator](#) includes expanded I/O and enhanced control panel functionality not available in LogixPro™. A valuable lab activity is to have students add rungs that take advantage of these additional inputs and outputs.

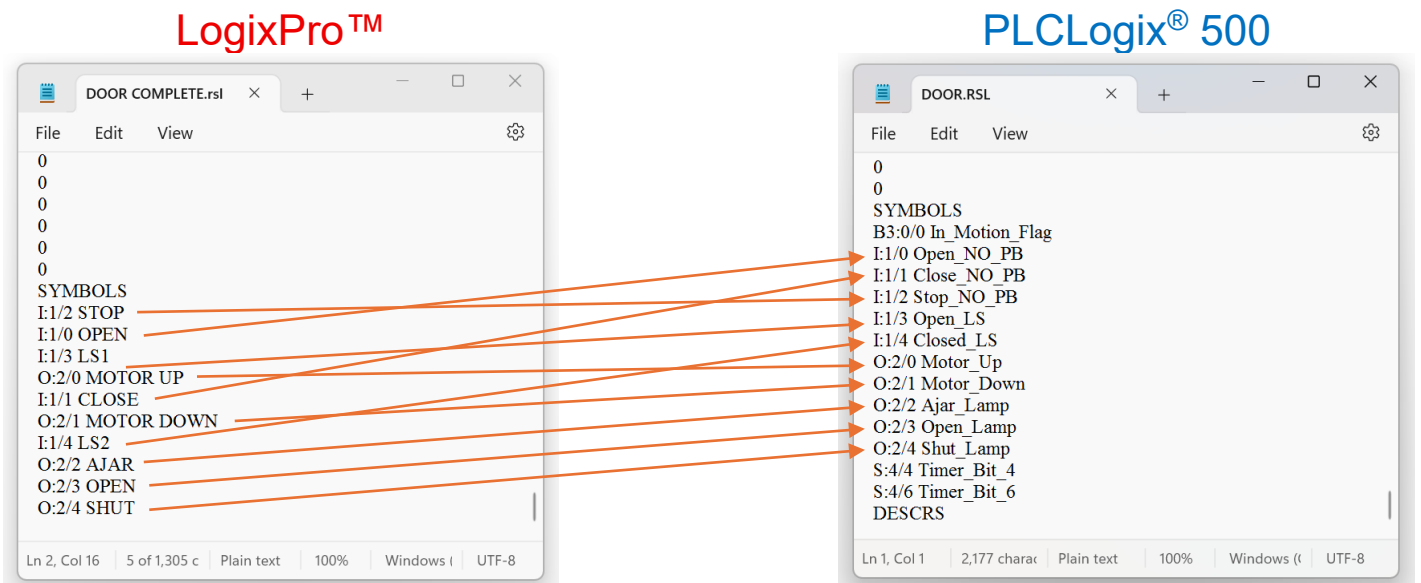
In addition, PLCLogix® 500 provides more than 200 built-in lab projects, all available offline. These prewritten programs can serve as examples, templates, or guided exercises for students learning ladder logic.

Comparing I/O Between LogixPro and PLCLogix 500

To compare the I/O assignments of two programs:

1. Right-click each *.rsl file.
2. Select **View as Text File**.
3. Scroll to the bottom of each file to review the I/O cross-reference section.

This allows you to quickly identify differences in addressing or hardware behavior between the two simulators.



The above information not only outlines how to open, test, and update legacy LogixPro™ programs, but also demonstrates how seamlessly the new PLCLogix® 500 simulator software can be used to complete the PLC exercises found in the instructor lab manual built into our [PLC Training course software](#). By adopting PLCLogix® 500, instructors gain a modern, fully compatible environment for teaching ladder logic and troubleshooting—ensuring students can work through both legacy simulations and the latest lab activities with confidence.