

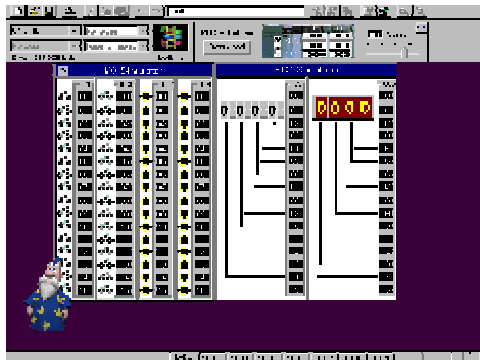
PLC Training and Simulator, 2 CD Set.

The samples below are from the PLC simulation CD that come in this two CD set. For more details of both CDs, please see ...

http://www.bin95.com/ebooks/plc_training_simulator.htm

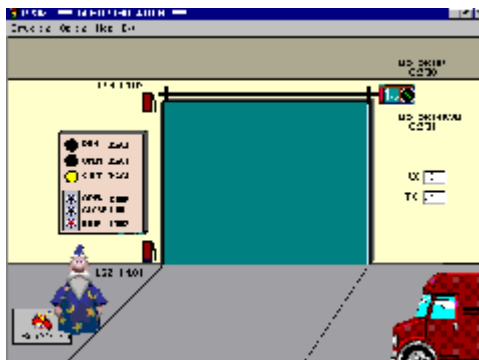
(1) Hardware I/O and BCD Simulator/Tester/Demonstrator

- 32 switches (2x16), user selectable by type
- 32 lights (2x16), user selectable color
- 4 Hexidecimal LED displays
- 4 Binary Coded Decimal Thumbwheel Switches



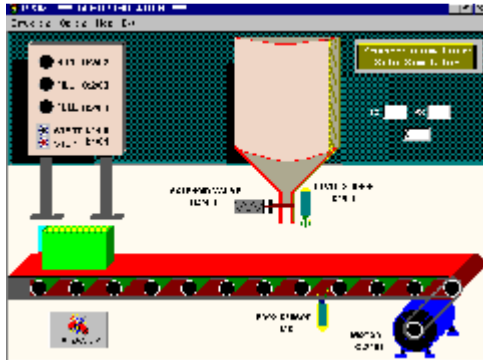
(2) Motorized Garage Door simulation

- Operator Station Panel and controls
- Up, Down and Stop Push-button Station
- Run, Open, Shut Panel Indicators
- Open and Closed limit switches
- Bi-directional Door Motor



(3) Automated filling system

- Operator Station Panel and controls
- Conveyor with position sensors (photo switch)
- Hopper with motorized chute control
- Product Level Sensor
- Conveyor Motor



(4) Intersection Traffic Light Control Simulation

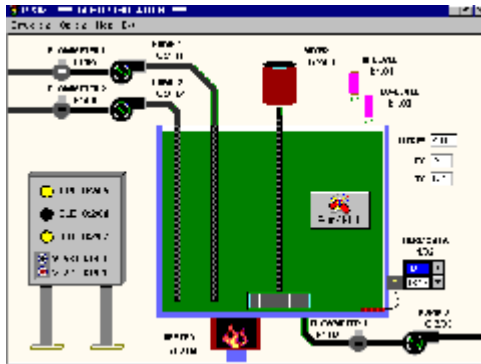
- 2-way traffic intersection system
- 2 Green Lights
- 2 Red Lights
- 2 Amber Lights
- 2 Walk/Don't Walk Lights
- 2 Pedestrian Walk Buttons
- 2 Vehicle Sensor Grid Switches



(5) Batch Mixing system Simulation

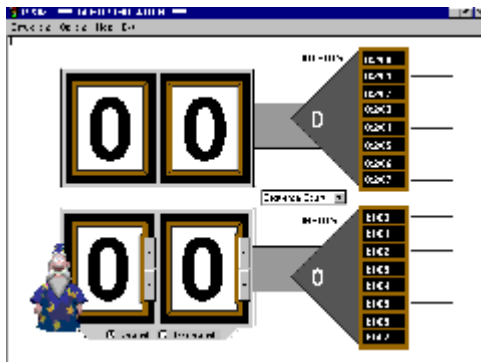
- Operator Control Panel
- 2 filler pumps and piping
- 2 flow meters on filler lines
- 1 mixing motor
- 2 level sensors (hi and low)
- 1 gas fired heater (controlled valve)
- 1 temperature controller
- 1 discharge pump

- 1 discharge flow meter



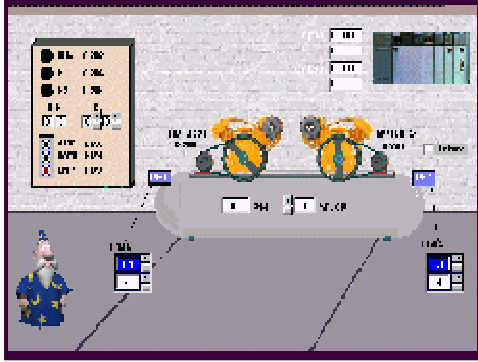
(6) (BCD) Binary Coded Decimal Simulator

- 2 Hexidecimal LED displays
- 2 Decimal/Hexidecimal Thumbwheel Switches
- User Option of Decimal or Hexidecimal Modes
- Real-time Bit Indication Status



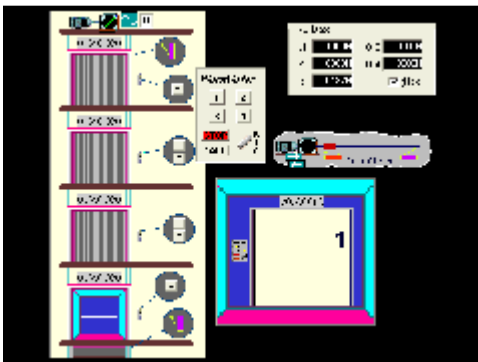
(7) (Comp) Dual Compressor Control Simulator

- Operator Control Panel
- 2 compressors and motors
- User adjustable Air-flow utilization.
- 2 Pressure Switches (adjustable setpoint and span)
- 2 Binary Coded Decimal LED displays
- 2 Binary Coded Decimal Thumbwheel Switches



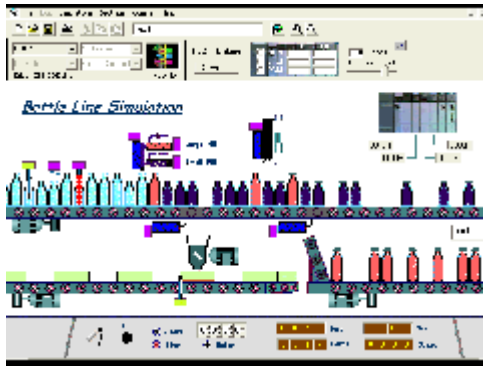
(8) 4 Floor Elevator Simulator

- Car mounted Control Panel c/w switches and lamps
- Bi-directional Door Motor c/w limit switches
- Bi-directional Elevator Motor c/w shaft encoder
- 6 Wall mounted service request switches c/w built in lamps.
- 4 Wall mounted plus 1 car mounted floor indicator lamps (quad)



(9) Bottle Line Simulator

- Full Operator Control Panel
- 3 Controllable Conveyors
- Presence, Bottle Size, and Broken Bottle Detection Switches
- Scrap Divertor Gate, and Scrap Grinder
- Scrap Boxing Conveyor Line
- 2 Product Filling Station
- 2 Product Capping Station
- 2nd Product Divertor Gate



The samples above are from the PLC simulation CD that come in this two CD set. For more details of both CDs, please see ...

http://www.bin95.com/ebooks/plc_training_simulator.htm